



R8 COVID-19 POLICY AND DIRECTION

Dr. Chanvit Tharathep

R8 POLICY AND DIRECTION

- Value Management****
- Strategic Focus
- Efficiency
- Primary Prevention
- Participation

Smart Move

WHAT SHOULDN'T DO

- Nonsense Meeting
- No evidence and/or devalue intervention
 - Routine face to face Meeting
 - Intensive resources spending Interventions without evidence based better outcome ****
 - ? ARI*** -> should be evaluated
- Standing Routine Order ***



"You cannot fight a fire blindfolded."

16 March 2020

Countries should test every suspected case of COVID-19.

If people test positive, they should be isolated and the people they have been in close contact with up to 2 days before they developed symptoms should be sought out, and those people should be tested too if they show symptoms of COVID-19.

WHO also advises that all confirmed cases, even mild cases, should be isolated in health facilities, to prevent transmission and provide adequate care.

But we recognize that many countries have already exceeded their capacity to care for mild cases in dedicated health facilities.

In that situation, countries should prioritize older patients and those with underlying conditions.



World Health Organization (WHO) ✓

@WHO



Replying to @WHO

"We have a simple message for all countries:

test

test



PRE-EXISTING CONDITION	DEATH RATE confirmed cases	DEATH RATE all cases
Cardiovascular disease	13.2%	10.5%
Diabetes	9.2%	7.3%
Chronic respiratory disease	8.0%	6.3%
Hypertension	8.4%	6.0%
Cancer	7.6%	5.6%
<i>no pre-existing conditions</i>		0.9%

SEX	DEATH RATE confirmed cases	DEATH RATE all cases
Male	4.7%	2.8%
Female	2.8%	1.7%

AGE	DEATH RATE confirmed cases	DEATH RATE all cases
80+ years old	21.9%	14.8%
70-79 years old		8.0%
60-69 years old		3.6%
50-59 years old		1.3%
40-49 years old		0.4%
30-39 years old		0.2%
20-29 years old		0.2%
10-19 years old		0.2%
0-9 years old		no fatalities



WHAT SHOULD WE DO

Offering → Value identification

- 1st Phase, 2nd Phase → prevent known source infected cases from spreading infection to normal population
- 3rd Phase → unknown source of infection → everyone is potential infected population
 - What is the value to offer?



POLICY AND DIRECTION

- Make hospital & workforce save in disaster
- Adequate supplied and workforce to face crisis
- Limit severe case and mortality****

POLICY AND DIRECTION

Make hospital save in disaster -> Workforce safety & healthy & available

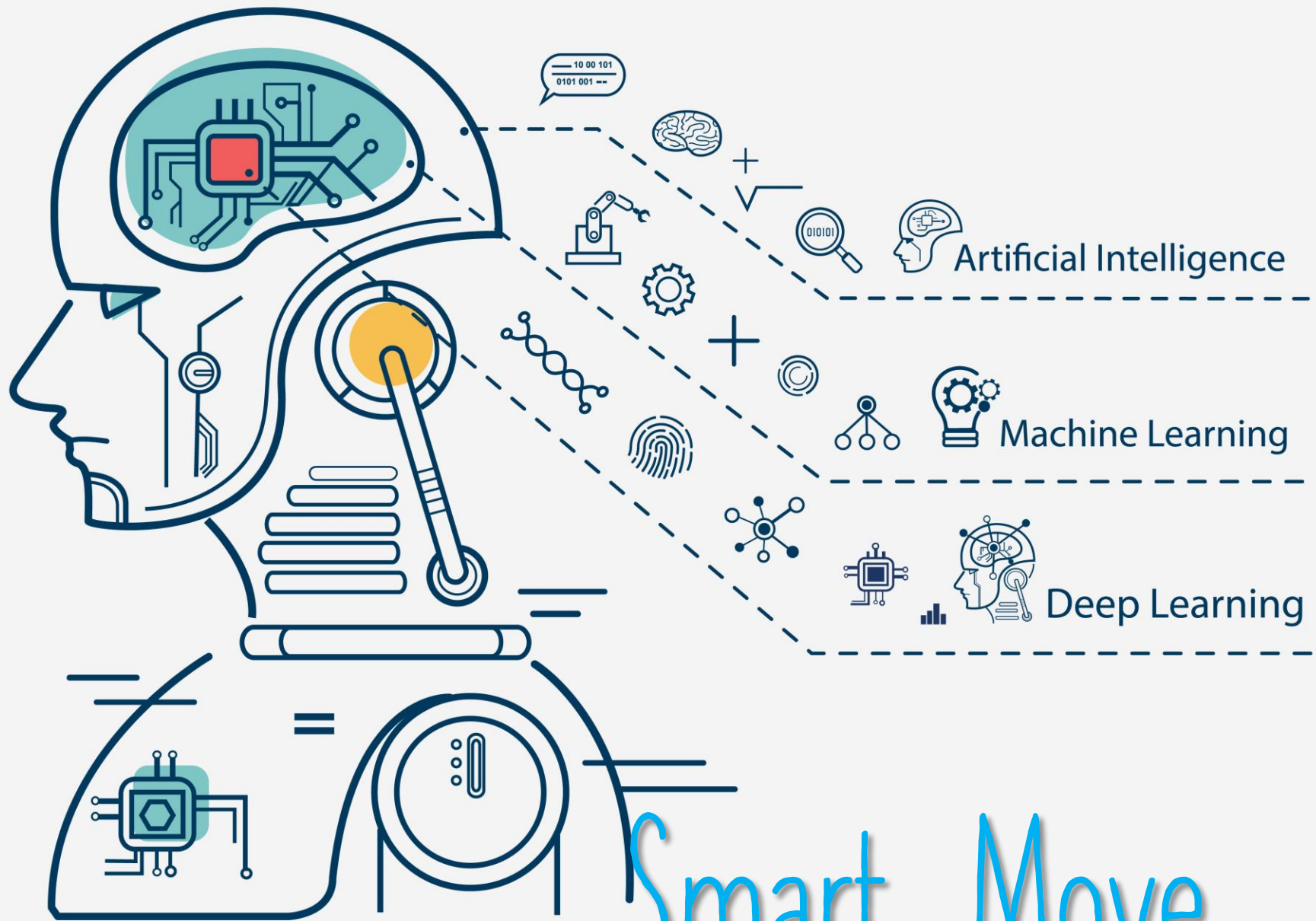
- limit meeting -> Online
- Online Primary Prevention ***

Adequate supplied and workforce to face crisis

- Equipment stock on cloud** : medical supply, medical device: resources sharing
- Workforce and facility on cloud** : specialist, bed, isolated room : resource sharing

Limit severe case and mortality****

- Universal Precaution -> everyone is potential infectious.
- Identify and Isolate potential severe case and high mortality by Loopback web service*** -> Primary Prevention***



Smart Move

